

Resonant magnetic x-ray scattering from terbium

This article has been downloaded from IOPscience. Please scroll down to see the full text article.

2008 J. Phys.: Condens. Matter 20 445208

(<http://iopscience.iop.org/0953-8984/20/44/445208>)

View [the table of contents for this issue](#), or go to the [journal homepage](#) for more

Download details:

IP Address: 129.252.86.83

The article was downloaded on 29/05/2010 at 16:08

Please note that [terms and conditions apply](#).

Resonant magnetic x-ray scattering from terbium

J Stremper¹, D Hupfeld², J Voigt², G Bihlmayer², A I Goldman³ and Th Brückel²

¹ Hamburger Synchrotronstrahlungslabor HASYLAB, Deutsches Elektronensynchrotron DESY, D-22503 Hamburg, Germany

² Institut für Festkörperforschung, Forschungszentrum Jülich, D-52425 Jülich, Germany

³ Ames Laboratory, USDOE and Department of Physics and Astronomy, Iowa State University, Ames, IA 50011, USA

E-mail: joerg.stremper@desy.de

Received 8 May 2008, in final form 5 August 2008

Published 30 September 2008

Online at stacks.iop.org/JPhysCM/20/445208

Abstract

Resonant magnetic x-ray scattering from Tb in the spiral phase is studied in great detail.

Polarization analysis in the σ - σ' and σ - π' channels has been performed for magnetic $(0, 0, l \pm \tau)$ satellite reflections over the accessible wavevector range $Q = 1.9$ – 6.5 \AA^{-1} .

A characteristic splitting of the resonance signal as a function of energy has been observed at the L_{II} as well as at the L_{III} absorption edge. The shape of the resonance depends on Q and is different for the two edges. Up to three components were observed with a separation in energy between 3.3 and 4.9 eV, compared to a core hole lifetime broadening of 2.5 eV, which is in agreement with the density of states in Tb metal.

(Some figures in this article are in colour only in the electronic version)

1. Introduction

The first resonant magnetic x-ray scattering experiment from an antiferromagnet was performed on Ho [1, 2] and revealed new features not found in previous neutron scattering experiments, such as spin-slip discommensurations in the helical phase. This study initiated a reinvestigation of the magnetic structure of the rare earth elements [3–10]. The available data now provide a wealth of information about the resonance scattering process itself. Hannon *et al* interpreted the scattering process in an atomic-like model [11]. In second-order perturbation theory for the coupled system of magnetic atom and electromagnetic wavefield, the observed resonances can be described as virtual transitions induced by the incident photons from core states to excited states with subsequent coherent reemission. According to [11], the process becomes sensitive to the magnetic state due to the exchange splitting of the intermediate excited states, hence the name ‘x-ray resonance exchange scattering’ (XRES). To emphasize the relation to magnetism, we will use here the less specific term ‘resonant magnetic x-ray scattering’ (RMXS). The extent to which solid state properties must be taken into account is still an open issue. Compared to a simple model description in

terms of atomic-like wavefunctions, a number of factors can influence the strength and resonance lineshape of RMXS in the solid, such as the electronic band structure (density of states and modified radial wavefunctions), the hybridization and exchange interaction between bands, the spin-orbit coupling and crystal-electric field effects. In the present study, we present resonant scattering data which clearly reflect features of the band structure of the electronic states for terbium metal. The situation for the lanthanides can be summarized as follows: strong resonance enhancements are observed at the L_{II} and L_{III} edges, while the enhancement at the L_I edge is negligible due to the small overlap between the $1s$ core states and the relevant intermediate states. The so-called ‘branching ratio’, i.e. the ratio between the intensity enhancement at the L_{III} and L_{II} edges, varies continuously throughout the lanthanide series [12], with values larger than one for the light rare earths, approximately one for the S-state of Gd [13] and smaller than one for the heavy rare earths. Recently, the branching ratio for the heavy rare earths has been explained in terms of the role of spin-orbit coupling in the $5d$ band [14]. Polarization analysis shows that the dominant transitions are of dipolar character. In the atomic model they consist of the $2p \rightarrow 5d$ transition. A spin polarization of the $5d$ band induced by the magnetic $4f$

levels is required for sensitivity to the magnetic state of the atom. Within the limits given by the lifetime broadening of the intermediate excited states of about 2–4 eV, fine structures of the electronic levels were not observed in most cases and the resonance lineshape could well be approximated by a model assuming transitions between two sharp atomic-like electronic levels. One notable exception is metallic Tb [4]. In addition to the dipolar transitions, quadrupolar transitions $2p \rightarrow 4f$ shifted with respect to the dipolar resonances to smaller energies are possible. In general, these quadrupole resonances are weaker than the dipolar resonances and are not observed for all rare earth metals.

As we will show in this paper, magnetic resonant scattering from terbium in its antiferromagnetic state does not fit into this general picture. The experiments on Tb are rather challenging, since the magnetic moment in the antiferromagnetic, helical state below $T_N \sim 230$ K remains very small before a transition into a basal-plane ferromagnetic state occurs at $T_C \sim 220$ K. In the first resonance experiments on Tb [15, 16], only the stronger L_{III} resonance was observed, which seemed to behave normally. In a subsequent study [4], the resonance at the L_{II} edge was also investigated. The observations indicated a splitting of the L_{II} resonance in energy. The authors modelled the Q dependence of the splitting in terms of one quadrupolar and one dipolar transition and attempted a polarization analysis at one Q position. Despite these efforts, the origin of the observed double resonance remains controversial. So far no experiment has been conducted to investigate the resonant scattering in the σ – σ' and σ – π' channel separately at different positions in reciprocal space. Without polarization analysis it is not possible to determine the nature of the scattered intensities in the different peaks, e.g. dipolar or quadrupolar, the first step in determining the origin of the scattering observed. In what follows, we will present results of such a complete polarization study. These data have been obtained on a third generation synchrotron source where the energy resolution compared to the second generation source was improved by a factor of three. This is of great importance in the case of the double resonance in terbium since the peak splitting is only about 4.5 eV.

2. Experimental details

The RMXS experiments presented here were conducted at the undulator beamlines 12-ID-B (BESSRC-CAT) and 6-ID-B (MUCAT) at the Advanced Photon Source (APS) at Argonne National Laboratory. Preliminary studies with polarization analysis were conducted at the wiggler beamline W1 at HASYLAB/DESY. Here, the incident beam was approximately 94% linearly polarized and had an energy spread of about 3.3 eV. In the experiments conducted at the APS, the incident beam was 99.9% linearly polarized perpendicular to the vertical diffraction plane and the energy spread was as low as 1.3 eV. The photon energy was tuned to the terbium L_{II} (8252 eV) and L_{III} edges (7514 eV).

The terbium crystal we used is a cube with dimensions of $4 \times 4 \times 4$ mm³. Because of the relatively low penetration depth of $3 \mu\text{m}$ at the L_{II} edge, the (000 1) face (in what follows, we

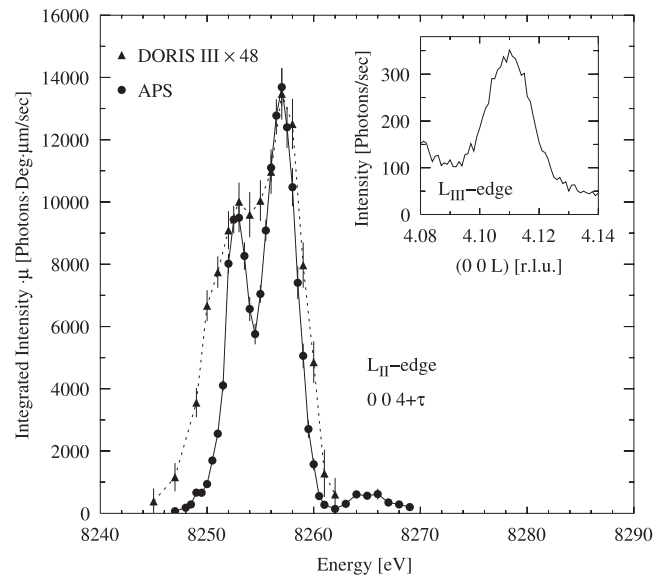


Figure 1. Comparison of the (004 + τ) magnetic reflection of Tb at a second- (\blacktriangle) and a third-generation synchrotron source (\bullet) measured with σ – π' polarization analysis after correction for absorption. The DORIS III data have been multiplied by a factor of 48 to be scaled to the APS data. The solid and dashed lines are guides to the eye. The inset shows raw data from an I-scan over the magnetic (004 + τ) satellite at the peak maximum of the L_{III} resonance at 7.482 keV at a sample temperature of $T = 224$ K, measured at the APS.

use the Miller indices hkl) was etched with HNO_3 to remove the oxide layer just before the crystal was mounted in a closed-cycle cryostat. The rocking curve width of the crystal after etching was 0.18° .

Polarization analysis in the σ – π' channel was performed using a pyrolytic graphite crystal. The (006)-reflection of the PG-analyser crystal ($2d = 2.236 \text{ \AA}$) gives a diffraction angle of $2\theta = 84.4^\circ$ and $2\theta = 95.1^\circ$ for the L_{II} and L_{III} edges, respectively. This results in a suppression of the σ – σ' scattering by two orders of magnitude. A comparison between the measured resonance lineshapes taken from the same crystal in the same configuration at DORIS/HASYLAB (second-generation synchrotron source) and APS (third-generation synchrotron source) is shown in figure 1, where the absorption-corrected intensity of the (004 + τ) magnetic superstructure peak is shown (in both cases measured in the σ – π' channel). The energy resolution in the two experiments differs by about a factor of three. The figure clearly demonstrates the superiority of a modern source: the splitting, which is only hinted in the DORIS III data, is very pronounced in the APS data and the statistics is significantly improved.

Terbium crystallizes in a hexagonal close-packed structure with space group $P3/mmc$ and RT lattice parameters of $a = 3.599 \text{ \AA}$ and $c = 5.696 \text{ \AA}$ [17]. It undergoes a phase transition from the paramagnetic to an antiferromagnetic state at $T_N = 230$ K and another phase transition to a ferromagnetic phase at $T_C = 220$ K. In the antiferromagnetic phase the magnetic moment is ordered in a basal-plane helix. The turn angle varies with temperature between 16.7° and 21.3° from plane to plane, resulting in a propagation vector from $\tau = 0.0925$

($T = 221$ K) to $\tau = 0.1183$ ($T = 230$ K). The modulation wavevector is directed along $(00l)$. Thus, the experiment was focused on the investigation of satellites of type $(00l \pm \tau)$.

The basis vectors of the polarization for the incident and the diffracted beam with respect to the crystal axis are defined as shown in figure 2. In our geometry, the magnetic moment lies within the \hat{U}_1 – \hat{U}_2 plane with the propagation vector along \hat{U}_3 .

According to [18] we can write the cross section for $(00l \pm \tau)$ reflections for purely dipolar scattering from a basal-plane helix and perfectly linearly polarized incident radiation perpendicular to the scattering plane as

$$\begin{aligned} d\sigma/d\Omega|_{E1}^{\text{res}} &= (F^{(2)})^2 \delta(Q - G) \\ &+ \frac{1}{4} \cos^2 \theta (F^{(1)})^2 \delta(Q - G \pm \tau) \\ &+ \frac{1}{16} (1 + \sin^2 \theta) (F^{(2)})^2 \delta(Q - G \pm 2\tau) \end{aligned} \quad (1)$$

where $F^{(1)}$ and $F^{(2)}$ describe the transition probabilities from initial to intermediate states for the first- and second-order reflections, respectively, determining the strength of the resonance. We want to emphasize that these transition probabilities are independent of the momentum transfer, but depend strongly on the properties of the intermediate states such as, for example, on the inverse lifetime Γ . The studies presented here are limited to the first-order satellites which are described by the second term in (1). For our study of the resonance process itself, the quantity of interest is the strength $F^{(1)}$ of a given resonance. Apart from an insignificant constant (scaling factor) $F^{(1)}$ can be determined from the integrated intensity $I_{\text{meas}} = I_{\text{meas}}(E, G \pm \tau)$ of a satellite reflection $G \pm \tau$ according to

$$|F^1|^2 = I_{\text{meas}} T^{-1} L^{-1} / (T_{\text{DW}} \cos^2 \theta) \quad (2)$$

with T the transmission, $L^{-1} = \sin(2\theta)$ the inverse Lorentz factor, T_{DW} the Debye–Waller factor and the cosine term in (1), accounting for the spin direction with respect to the polarization. The variation of the absorption coefficient μ over the L_{II} and L_{III} edges has been calculated from the fluorescence of the Tb sample and a Tb foil according to the formalism described in [13]. The necessary coefficients μ_1 , μ_2 and μ_F have been calculated with the program package *absorption* by Brennan and Cowan [19]. The absorption corrections have then been applied to the data. In our case, where the incoming and scattered beam are symmetric to the crystal surface, the measured intensities have simply to be multiplied by the energy dependence of μ over the edge to obtain the corrected intensities [13].

A temperature dependence of the magnetic intensity has been measured and the maximum intensity was found at 224 K. The measurements presented in the following have been conducted at this temperature, where we found $\tau = 0.11$ (see inset in figure 1). The behaviour of the magnetic intensity with temperature found here supports the results reported earlier [20, 4].

At the L_{III} edge, energy scans have been performed to measure the energy dependence of the magnetic intensities. At some positions, a huge energy-dependent background was found. Therefore, the same energy scan has been performed

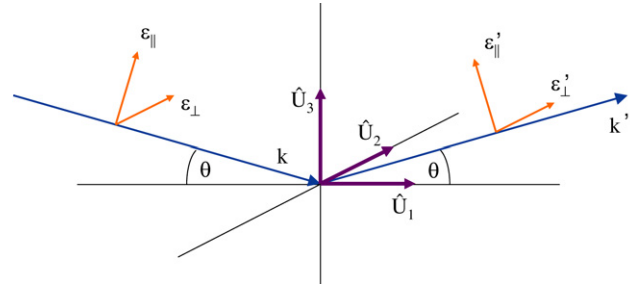


Figure 2. Scattering geometry and polarization with respect to the crystal geometry. \hat{U}_1 , \hat{U}_2 and \hat{U}_3 denote the basis vectors of the magnetic structure and $\varepsilon_{\perp/\parallel}$ ($\varepsilon'_{\perp/\parallel}$) the incoming (scattered) polarization perpendicular (σ) and parallel (π) to the diffraction plane.

at 224 K, in the antiferromagnetic phase, and at 231 K in the paramagnetic phase, where the magnetic signal has vanished. The purely magnetic signal was obtained by a subtraction of the two scans. At the L_{II} edge, at each energy point a complete rocking curve has been taken. To make sure that both approaches lead to the same result, rocking curve scans at some energies were performed as well as at the L_{III} edge. The comparison of the data obtained with the two different methods showed that subtracting the background measured above the phase transition to obtain the magnetic signal is completely justified.

3. Description of resonant magnetic x-ray scattering

The resonance peak shape for RMXS is described in [13]. The scattering cross section is proportional to the square of the sum of the scattering amplitudes for charge scattering (A_C), non-resonant magnetic scattering (A_M) and resonant magnetic scattering (A_R):

$$\frac{d\sigma}{d\Omega} \sim \left| A_C + i \left(A_M + \frac{A_R}{E} \frac{1}{(E - E_0) - i\frac{\Gamma}{2}} \right) \right|^2 \quad (3)$$

where E_0 denotes the edge energy and Γ the inverse lifetime of the intermediate state. Since in terbium we deal with two peaks in energy, the sum of the scattering amplitudes for both peaks has to be introduced. For the description of the magnetic superlattice peaks, the charge term can be neglected since there is no charge signal at these positions. The resonant magnetic scattering amplitudes and the non-resonant scattering amplitude are assumed to be real and are added, giving rise to an interference term between the resonance terms:

$$\begin{aligned} \frac{d\sigma}{d\Omega} &\sim \left| A_M + \frac{A_1}{E} \frac{1}{(E - E_1) - i\frac{\Gamma_1}{2}} + \frac{A_2}{E} \frac{1}{(E - E_2) - i\frac{\Gamma_2}{2}} \right|^2 \\ &\sim A_M^2 + \left(\frac{A_1}{E} \right)^2 \frac{1}{(E - E_1)^2 + (\frac{\Gamma_1}{2})^2} \\ &\quad + \left(\frac{A_2}{E} \right)^2 \frac{1}{(E - E_2)^2 + (\frac{\Gamma_2}{2})^2} \end{aligned}$$

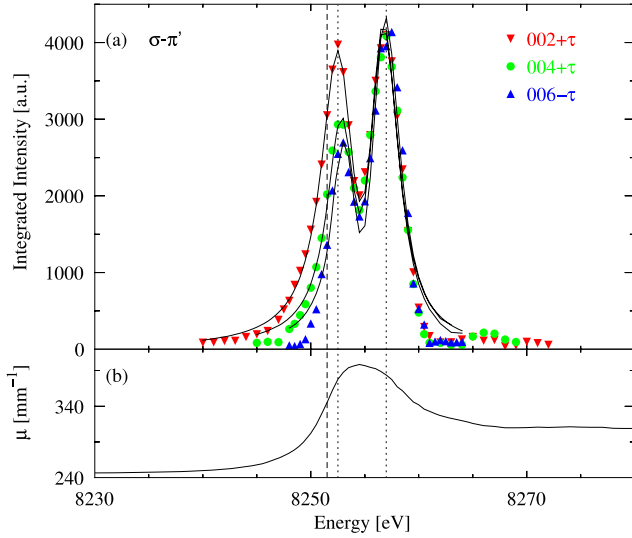


Figure 3. (a) Energy dependence at the terbium L_{II} edge of the magnetic $(002 + \tau)$, $(004 + \tau)$ and $(006 - \tau)$ satellite reflections. At the bottom (b) the absorption coefficient over the edge is shown. The solid lines represent the fits of equation (4) to the experimental data. The vertical dashed line gives the position of the absorption edge. The vertical dotted lines are separated by 4.5 eV and show the position of the resonance peaks.

$$\begin{aligned}
 & + \frac{2A_M}{E} \left(\frac{A_1(E - E_1)}{(E - E_1)^2 + \left(\frac{\Gamma_1}{2}\right)^2} + \frac{A_2(E - E_2)}{(E - E_2)^2 + \left(\frac{\Gamma_2}{2}\right)^2} \right) \\
 & + \left| \frac{A_1 A_2}{E^2} \right| \frac{(E - E_1)(E - E_2) + \frac{\Gamma_1 \Gamma_2}{4}}{\left[(E - E_1)^2 + \left(\frac{\Gamma_1}{2}\right)^2 \right] \left[(E - E_2)^2 + \left(\frac{\Gamma_2}{2}\right)^2 \right]}.
 \end{aligned} \quad (4)$$

To fit the experimental data, this function has to be convoluted with a Gaussian representing the energy resolution of the instrument.

The resonant scattering process at the L_{II} and L_{III} edges in rare earths involves dipole transitions from the 2p level to the weakly polarized s and d bands, where the transition to the 5d band is much stronger than that to the s band. 4f levels can only be probed directly by quadrupolar transitions from the 2p core levels. The dipolar transitions are $2p_{1/2} \rightarrow 5d$ for the L_{II} and $2p_{3/2} \rightarrow 5d$ for the L_{III} edge. The dipolar transition is usually expected to occur at an energy slightly above the edge (inflection point of the resonance) whereas the quadrupolar transition should occur below the edge because of a lowering of the 4f energy compared with other levels due to the reduced screening of the nuclear charges.

4. Results

The energy dependences of the magnetic satellite intensities around the (002) , (004) and (006) reciprocal lattice positions have been measured at the L_{II} edge as well as at the L_{III} edge at a temperature of $T = 224$ K where maximum intensity is obtained. The results for the L_{II} edge are shown in figure 3(a) for the $(002 + \tau)$, $(004 + \tau)$ and $(006 - \tau)$ satellite reflections in the $\sigma - \pi'$ scattering geometry. The data

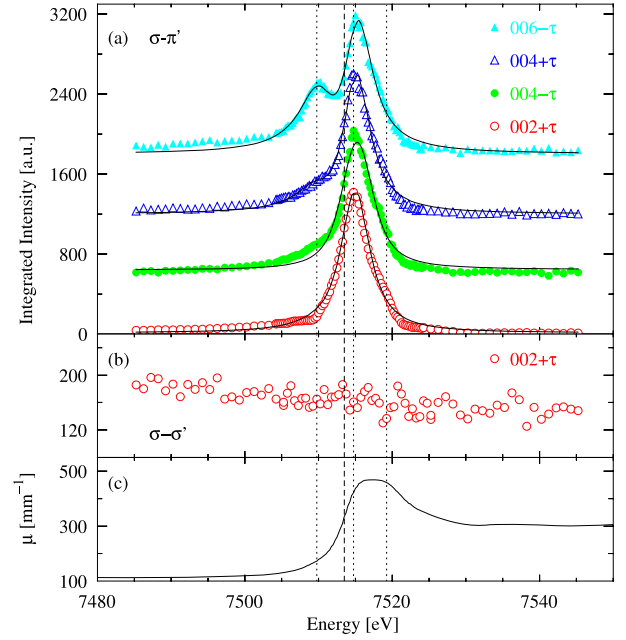


Figure 4. (a) Energy dependence at the terbium L_{III} edge of the magnetic $(002 + \tau)$, $(004 - \tau)$, $(004 + \tau)$ and $(006 - \tau)$ satellite reflections in the $\sigma - \pi'$ geometry. The intensities are normalized to be equal in intensity for the higher energy peak. The four curves have an offset of 600 units in intensity to give better visibility. The solid lines represent the fits of equation (4) to the experimental data. Below, the result of the $\sigma - \sigma'$ polarization analysis at the $(002 + \tau)$ position is shown (b). The graph at the bottom (c) shows the absorption coefficient μ as a function of energy. The vertical dashed line gives the position of the absorption edge. The vertical dotted lines give the positions of the resonance peaks. The two peaks at $E = 7510$ and 7514.9 eV are separated by 4.9 eV.

are corrected for absorption, as described in section 2. There are two distinct peaks of similar intensities observed, one just below the white line but above the absorption edge and one just above. In addition, a small peak far above the white line at 8265 eV is present which appears in the measurement of the $(002 + \tau)$ as well as the $(004 + \tau)$ reflection. The intensities are normalized to the strong resonance peak above the white line. To show the relative position of the magnetic peaks with respect to the absorption edge, the absorption coefficient as a function of energy is plotted in figure 3(b).

In figure 4(a) the energy dependences of the magnetic intensity at the L_{III} edge are shown for four different satellites measured in $\sigma - \pi'$ scattering geometry: $(002 + \tau)$, $(004 - \tau)$, $(004 + \tau)$ and $(006 - \tau)$. As at the L_{II} edge, the data are corrected for absorption. Here, instead of two distinct peaks as at the L_{II} edge only the peak directly at the absorption edge (7481.9 eV), below the white line, is dominant and the peak at higher energies is very weak and is visible only as an extended tail at the respective location above the white line. In addition, a weak peak at lower energies is appearing with increasing momentum transfer.

At the L_{III} edge, in addition to the $\sigma - \pi'$ channel, the $\sigma - \sigma'$ channel was also investigated by performing energy scans at the intensity maximum of the rocking curve. At the $(002 + \tau)$ reflection, where, according to calculations detailed in [4],

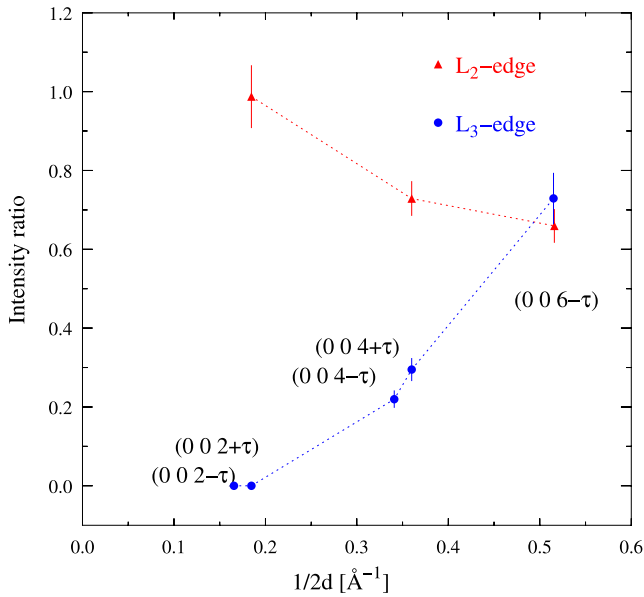


Figure 5. The peak intensity ratios of the energy dependencies shown in figures 3 and 4 are displayed. Whereas the ratio for the L_{II} edge (\blacktriangle) is taken from the peak below and above the white line, the ratio at the L_{III} edge (\bullet) was calculated from the two peaks below the white line in the absorption edge.

a possible quadrupolar contribution should be strongest, no contribution was found. The corresponding σ - σ' signal is shown in figure 4(b). The measurement of the signal in the σ - σ' channel for other positions in reciprocal space was made impossible due to the large background signal originating in the main Bragg reflections.

A model function using equation (4), where two resonant scattering amplitudes are added, has been fitted to the peaks at the L_{II} and L_{III} edges. In describing the 5d states we are usually dealing with broad bands with widths of several eV (see figure 7). Nevertheless, as a first approximation an atomic model is assumed in order to be able to perform the fits of the resonant cross section to the energy dependence of the magnetic intensities. The resulting fitting curves are included in figures 3 and 4. The values obtained for the linewidths, amplitudes and the splitting in energy are given in table 1. No non-resonant contribution to the magnetic signal could be detected. To fit the curves at the L_{III} edge, the fit was first performed at the $(006 - \tau)$ reflection, where both peaks are clearly visible. For the remaining peaks, the width and position of the lower peak was fixed and only the intensity of this peak and all parameters of the second peak have been varied.

At the L_{II} edge, the fits of (4) to the $(004 + \tau)$ and $(006 - \tau)$ reflections do not agree well with the experimental data in the tails, when the beamline resolution of $\Delta E = 1.3$ eV is used. Nevertheless, the resolution was kept fixed, since otherwise the linewidths Γ would show unreasonably low values.

In figure 5, the intensity ratios of the two peaks of figures 4 and 3, respectively, are displayed. For the L_{II} edge, the intensity ratio of the peaks above and below the white line is shown. For the L_{III} edge, the intensity ratio between the

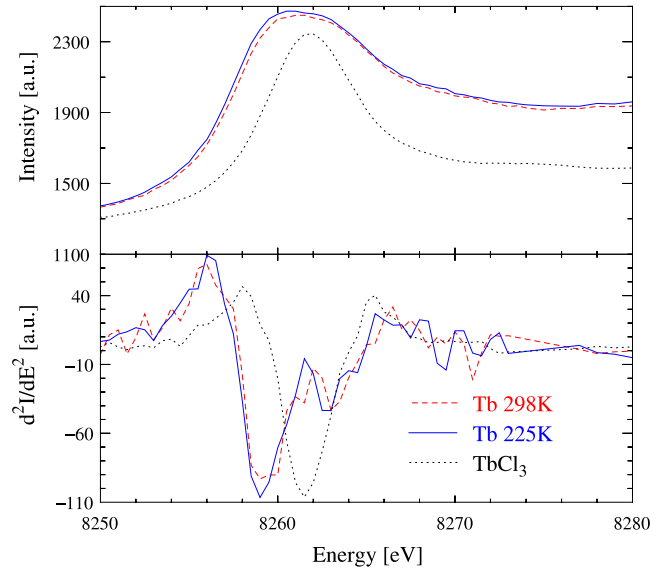


Figure 6. Fluorescence scan over the L_{II} edge of pure terbium at a temperature of 298 and 225 K. This is compared to the result for $TbCl_3$, measured at room temperature. The second derivative of the intensity with respect to the photon energy is shown as well.

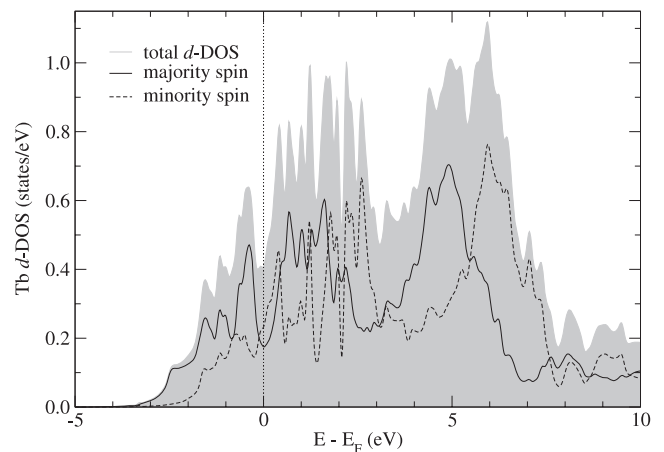


Figure 7. Density of states of the d-like states in Tb metal as a function of energy with respect to the Fermi surface. The total density of states (grey shaded area) as well as the majority (—) and minority (- - -) spin density of states are given.

two peaks below the white line is plotted, where the lower one increases in intensity at high Q with respect to the upper peak. We plot the ratio of the intensities instead of the absolute intensities in order to avoid the influence of geometrical effects due to varying scattering angles.

At the L_{II} edge, the energy dependence has been measured for three different sample temperatures in the antiferromagnetic phase (220, 224 and 227 K) at the $(002 + \tau)$ reflection. The results do not show any significant difference in the intensity ratio of the two peaks. The ratio between the peak intensities is 1.01(2). This is supported by the finding that the fluorescence of terbium does not show any change between the antiferromagnetic phase and room temperature.

The fluorescence was measured at the L_{II} and L_{III} edges and shows some asymmetry as can be seen in figure 6(a) for

Table 1. Linewidth obtained by a fit of equation (4) to the data convoluted with the fixed instrumental energy resolution of $\Delta E = 1.3$ eV. At the L_{II} edge all parameters are refined independently. The peak separation in energy is shown, as well as the ratio of the amplitudes A_i and the position in energy. At the L_{III} edge only at the $(006 - \tau)$ reflections all parameters are refined.

Edge	Reflection	Γ_1 (eV)	Γ_2 (eV)	E_1	E_2	Δ (eV)	A_1/A_2
L_{II}	$(002 + \tau)$	2.93(9)	2.49(5)	8252.8	8256.5	3.8	1.152
	$(004 + \tau)$	2.31(8)	2.64(5)	8253.2	8256.5	3.3	0.639
	$(006 - \tau)$	1.82(8)	2.51(5)	8253.3	8256.6	3.3	0.486
L_{III}	$(002 + \tau)$	—	4.34(7)	—	7514.9	—	—
	$(004 - \tau)$	5.04(fix)	4.24(9)	fix	7514.9	4.9	0.211
	$(004 + \tau)$	5.04(fix)	4.19(9)	fix	7514.8	4.8	0.281
	$(006 - \tau)$	5.04(4)	4.15(12)	7510.0	7514.9	4.9	0.706

the L_{II} edge. The fluorescence of Tb metal at 224 K and RT is compared to the fluorescence of $TbCl_3$. In the latter, the valence state of terbium is purely Tb^{3+} and consists only of a single line. In comparison, the significant broadening of the white line in Tb metal becomes obvious. In figure 6(b) the respective second derivatives are shown. The extrema of the second derivative give the positions of the largest change in slope of the fluorescence, showing the location of peak maxima of components within the broad peak. The two extrema observed for Tb metal coincide with the positions in energy of the magnetic resonances. From the comparison of the observed splitting in energy between the two peaks and the density of states of the 5d bands calculated for Tb metal, a possible conclusion is that the two peaks at the L_{II} edge arise from transitions into different energy levels of the 5d band.

5. Discussion

According to a calculation presented in [4] dipolar and quadrupolar intensities can be expected at the $(002 + \tau)$ reflection. While intensity due to dipolar transitions appears only in the $\sigma-\pi'$ channel, intensity due to quadrupolar transitions appears in the $\sigma-\sigma'$ as well as in the $\sigma-\pi'$ channel. Thus, a possible quadrupolar contribution which is measured in the $\sigma-\pi'$ channel should appear purely in the $\sigma-\sigma'$ channel without any other contribution superposed. Moreover, for a helical spin arrangement the quadrupolar intensity should vanish completely around $\sin\theta/\lambda = 0.45$ as is the case for the $(004 \pm \tau)$ satellites [4].

From our measurements we can conclude that the intensities measured at the L_{II} edge are clearly of dipolar nature for both peaks in energy. This conclusion can be drawn from the fact that both peaks appear at the $(004 \pm \tau)$ positions, where the quadrupolar contribution would be zero. Also, the intensity ratio between the two peaks in energy at the L_{II} edge measured at this position in the $\sigma-\pi'$ channel is the same as the one observed without polarization analysis.

At the L_{III} edge, the absence of a signal in the $\sigma-\sigma'$ channel at the $(002 + \tau)$ position shows that there is no quadrupolar contribution, as well. According to [4] a possible quadrupolar contribution should be present at this momentum transfer. Therefore, the small peak below the edge observed at the L_{III} edge cannot also be of quadrupolar nature, although a possible quadrupolar contribution would be expected right at this position in energy.

Density functional theory calculations employing the full-potential linearized augmented plane wave method [21] were performed to evaluate the density of states of the d-like states in Tb metal, shown in figure 7. For the calculation, a bulk unit cell with experimental lattice parameters and a spin spiral with a Q vector of $(0, 0, 0.1)$ was assumed. Non-collinear magnetism was included in the calculation as described in [22] and the spin spiral was simulated using the generalized Bloch theorem [23]. All other computational parameters were chosen as given in [24]. A clear splitting of the d band is found, which corresponds to different crystal field levels. It explains very well the two peaks at the L_{II} edge, which are separated by 3.8 eV, with electric dipole transitions from the $2p_{1/2}$ levels to the split 5d band. Still not well understood is the difference in Q dependence of the intensity for the different peaks separated in energy. The variation with Q of the peak intensity ratio for the different peaks separated in energy, as shown in figure 5, can only be explained by a process involved in the scattering process that is Q -dependent as well. Radial matrix elements are not included in this consideration. These are known to be important to explain details in the scattering process and may give an explanation for the observed intensity variations.

For the L_{III} edge, the transition probabilities from the $2p_{3/2}$ level into the split 5d band seem to be different from the L_{II} edge. Whereas the transition into the lower part of the band happens with similar probability than at the L_{II} edge, the transition probability into the higher part is strongly reduced.

A splitting of the energy dependence of the resonant intensities at the L_{III} edge has also been found in the resonance of Er (004) reflections in [Er | Tb] superlattices [25], showing a peak coming up 5 eV below the edge, as has been seen here. In a recent study of rare earth metals in the ferromagnetic phases by x-ray resonant interference scattering at the L_{III} edges, a splitting of the 5d DOS is indeed found for all heavy rare earth metals [26]. Thus, this peak splitting seems to be a general feature present in the rare earth materials, which has not been observed in the early experiments due to a lack of energy resolution.

6. Summary

In this paper we have presented new results on resonant x-ray scattering from terbium obtained with good energy resolution and by using polarization analysis. We could show that the double peak structure in energy is of purely dipolar nature at

the L_{II} as well as at the L_{III} absorption edge. The positions of different peaks are consistent with the density of states of the 5d band. The intensity variation over the absorption edges changes when the momentum transfer is changed, which cannot be explained by pure density of state effects. A more detailed theory has to take transition matrix element effects into account. The peak splitting is likely to be a general feature of the 4f metals, observed here only because of the good energy resolution. Our study demonstrates clearly that an atomic-like model is not appropriate to describe XRES in 4f metals and that solid state effects have to be taken into account for an accurate description of the resonance lineshapes.

Acknowledgments

We would like to thank K Attenkofer for fruitful discussions. Work at BESSRC-CAT and use of the Advanced Photon Source was supported by the US Department of Energy, Basic Energy Sciences, Office of Science, Division of Materials Sciences, under contract no. W-31-109-Eng-38 and the State of Illinois under HECA. The Midwest Universities Collaborative Access Team (MUCAT) sector at the APS is supported by the US Department of Energy, Basic Energy Sciences, Office of Science, through the Ames Laboratory under contract no. W-7405-Eng-82. This work has been supported by the BMBF (German Federal Ministry for Education and Research) under contract 05 NA8CJA 8.

References

- [1] Gibbs D, Harshman D R, Isaacs E D, McWhan D B, Mills D and Vettier C 1998 *Phys. Rev. Lett.* **61** 1241
- [2] Gibbs D, Grübel G, Harshman D R, Isaacs E D, McWhan D B, Mills D and Vettier C 1991 *Phys. Rev. B* **43** 5663
- [3] Hill J P, Sternlieb B J, Gibbs D, Detlefs C, Goldman A I, Stassis C, Canfield P C and Cho B K 1996 *Phys. Rev. B* **53** 3487
- [4] Perry S C, Costa M M R, Sterling W G, Longfield M J, Mannix D and Brückel T 1998 *J. Phys.: Condens. Matter* **10** 1951
- [5] Detlefs C, Goldman A I, Stassis C, Canfield P C, Cho B K, Hill J P and Gibbs D 1996 *Phys. Rev. B* **53** 6355
- [6] Detlefs C, Islam A H M Z, Goldman A I, Stassis C, Canfield P C, Hill J P and Gibbs D 1997 *Phys. Rev. B* **55** R680
- [7] Hill J P, Boothroyd A T, Andersen N H, Brecht E and Wolf T 1998 *Phys. Rev. B* **58** 11211
- [8] Detlefs C, Abernathy D L, Grübel G and Canfield P C 1999 *Europhys. Lett.* **47** 352
- [9] Islam Z, Detlefs C, Goldman A I, Bud'ko S L, Canfield P C and Zheludev A 1998 *Solid State Commun.* **108** 371
- [10] Islam Z, Detlefs C, Goldman A I, Bud'ko S L, Canfield P C, Hill J P, Gibbs D, Vogt T and Zheludev A 1998 *Phys. Rev. B* **58** 8522
- [11] Hannon J P, Trammel G T, Blume M and Gibbs D 1988 *Phys. Rev. Lett.* **61** 1245
- [12] van Veenendaal M, Goedkoop J B and Thole B T 1997 *Phys. Rev. Lett.* **78** 1162
- [13] Brückel T, Hupfeld D, Stempfer J, Caliebe W A, Mattenberger K, Stunault A, Bernhoeft N and McIntyre G I 2001 *Euro. Phys. J. B* **19** 475
- [14] Kim J W, Lee Y, Wermeille D, Sieve B, Tan L, Bud'ko S L, Law S, Canfield P C, Harmon B N and Gorldman A I 2005 *Phys. Rev. B* **72** 064403
- [15] Tang C C, Stirling W G, Jones D L, Wilson C C, Haycock P W, Rollason A J, Thomas A H and Fort D 1992 *J. Magn. Magn. Mater.* **103** 86
- [16] Gehring P M, Rebersky L, Gibbs D and Shirane G 1992 *Phys. Rev. B* **45** 243
- [17] Hanak J J and Daane A H 1961 *J. Less-Common Met.* **3** 110
- [18] Hill J P and McMorro D F 1996 *Acta Crystallogr. A* **52** 236
- [19] Brennan S and Cowan P L 1992 *Rev. Sci. Instrum.* **63** 850
- [20] du Plessis P de V, van Doorn C F and van Delden D C 1983 *J. Magn. Magn. Mater.* **40** 91
- [21] Wimmer E, Krakauer H, Weinert M and Freeman A J 1981 *Phys. Rev. B* **24** 864
- [22] Kurz P, Förster F, Nordström L, Bihlmayer G and Blügel S 2004 *Phys. Rev. B* **69** 024415
- [23] Herring C 1966 *Magnetism* ed G Rado and H Suhl (New York: Academic)
- [24] Sandratskii L 1986 *Phys. Status Solidi B* **136** 167
- [25] Döbrich K M, Bihlmayer G, Starke K, Prieto J E, Rossnagel K, Koh H, Rotenberg E, Blügel S and Kaindl G 2007 *Phys. Rev. B* **76** 035123
- [26] Voigt J, Kentzinger E, Rücker U, Wermeille D, Hupfeld D, Schweika W, Schmidt W and Brückel T 2004 *Europhys. Lett.* **65** 560
- [27] Brown S D, Strange P, Bouchenoire L, Zarychta B, Thompson P B J, Mannix D, Stockton S J, Horne M, Arola E, Ebert H, Szotek Z, Temmermann W M and Fort D 2007 *Phys. Rev. Lett.* **99** 247401